



**Roebuck**  
PRIMARY SCHOOL

# Roebuck Primary School

An Independent Public School - Broome Cluster

NEWSLETTER 11 - 15 November 2023

School Vision: Working together with high expectations; through quality teaching and leadership, Roebuck Primary School students will be positive, resilient, inclusive and successful citizens.

## DATES FOR YOUR DIARY

**Friday 17 November**  
Assembly - Whimbrel 5

**Monday 20 November**  
School Board Meeting 6pm

**Thursday 23 November**  
Interschool - Poetry Slam  
Choir and Band Lunchtime  
Concert 12.20 - 12.50pm

**Friday 24 November**  
Kindy Parent Info Session  
1 - 2pm

**Tuesday 28 November**  
Kindy Group A Info  
Session 2.30 - 3.30pm

**Wednesday 29 November**  
Kindy Group B Info  
Session 2.30 - 3.30pm

**P&C Meeting 6pm**

**Thursday 30 November**  
End of Year Presentation  
5.30 - 7.30pm

**Friday 8 December**  
Class Parties

**Wednesday 13 December**  
Year 6 Graduation 8.30am

**Thursday 14 December**  
Last day of Term 4 for  
students

**Friday 15 December**  
RPS SDD

## FROM THE PRINCIPAL

Ngaji Gurrjin – Welcome / Halo Semua Orang – Hello Everyone

Hard to believe that we have passed the half way mark of the term. As always there have been an array of student activities including Roebuck has Talent, the AFL 9's competition at Cable Beach, the Year 6's orientation day at Broome Senior High School, the Multisport Carnival for Years 3 to 6 and the Scholastic Book Fair. All are fantastic examples of events that celebrate the community that is Roebuck PS.

### WHAT ATTRIBUTE DO I VALUE MOST?

As a father of four boys, well, young men, I can attest to the fact that whilst they were brought up in the same household, they are very different: each pursuing his own journey. I frequently reflect on what attribute I respect and value the most in each – and I can attest to the one that resonates the most – **RESILIENCE**. No matter the field of endeavour - academic, behavioural, personal, wellbeing, employment, athletics, relationships..., the one attribute; the one strength is resilience.

It has been my pleasure this term to speak with students, across all year levels, who have demonstrated their own achievements and endeavours – only attained because of their tenacity and **RESILIENCE**.

Resilience is not on our Student Report but it is within the report. It's endeavour, It's working through challenges. It's striving for your personal best. It's accepting the status quo and working with what you have got. It's about just plain hard work. It is about being the best one can be, and as our school vision says

**Working together with high expectations; through quality teaching and leadership. Roebuck Primary School students will be positive, resilient, inclusive and successful citizens.**

Therefore, please recognise that the Effort you see on the report card is about the building of resilience; the building of character and the one attribute that will hold true in any endeavour, now and the future.

### SCHOOL STRUCTURE 2024

The school structure has been established with staff completing the placement of students to class profiles. This is done with considerable thought and deliberation by all staff. Due to the high transiency over the Christmas holidays, we do not release classes to parents, as we may make changes at the beginning of the year. Class lists will be available to view 30 January 2024. Please see letter on Connect for more information.

Galiya / Sampai Jumpa - Goodbye - *Mr Kelvin Shem*, Principal



**Roebuck**  
PRIMARY SCHOOL



**Broome Cluster of Independent Schools**

[Click here to view the Broome Senior High School Newsletters](#)



I am Kind  
to the Environment



Yawuru Country - Cnr Spoonbill Ave & Sanderling Dr DJUGUN - PMB 4000, BROOME WA 6725 Telephone: (08) 9195 1900  
Email: [roebuck.ps@education.wa.edu.au](mailto:roebuck.ps@education.wa.edu.au) Facebook: [@roebuckps](https://www.facebook.com/roebuckps) Website: [www.roebuckps.wa.edu.au](http://www.roebuckps.wa.edu.au)

# SCHOOL NEWS

## THE JOURNEY



What a wonderful legacy and journey is displayed by the photo timeline taken (in front of our Roebuck birds) of student Carys, from Kindergarten to Year 6. In speaking with Carys and mum, Linette, there are many people and events that have created such wonderful memories but more importantly opportunities both challenging and successful that have shaped and built Carys' character where she is well equipped and confident to continue her journey into high school.

## NEWS FROM THE MUSIC ROOM

We have a brand new instrument in the music room!! Introducing to you all Betty the bass xylophone. Betty is from the xylophone family (bars made from wood) and her main job in music making is to keep a steady beat while our voices or other instruments play the melody. She has a calming effect to all who hear her warm, resonant tone. Students have had a great time trying out Betty alongside our instrumental playing.

### **Lunch time concert Thursday 23 November**

The school choir and band are providing some lunch time entertainment on Thursday 23 November. Please see the attached flyer for details and we hope to see lots of our school community there at our community lunch with live entertainment. The two ensembles have worked incredibly hard leading up to this performance.

### **Broome Community Carols Sunday 3 December**

Our choir will be performing at the Broome Community Carols on Sunday 3 December this year. We're looking forward to entertaining the community with our upbeat song choice and hope to see lots of Roebuck PS families there for this community event at Town Beach. Things kick off from 4:30pm with the markets followed by the carols event.

*Mr Peter Murnane*, Music Teacher





# SCHOOL NEWS

## ASSEMBLY - 20 OCTOBER - HOSTED BY WHIMBREL 4

ROEBUCK RIPPLE RECOGNITION AWARDS					
Brooke S	Jackson A	Brody B	Mason G	Chloe S	Tyler A
Clara R	Ivy L	Jasmine C	George S	Tej P	Millie T
Rio H	Oliver H	Archer T	Archie W	Ethan V	Shayla A
Mason B	Tayo C	Connor S	Jacinta C	Zaara K	Archer S
Joey W	Julia H	Axel S			

BADGES				
Sonny O <b>Bronze</b>	Emily O <b>Bronze</b>	Isaiah N <b>Bronze</b>	Bella W <b>Bronze</b>	Frankie P <b>Bronze</b>

SPECIALISTS	
Science Spoonbill 1	Indonesian Spoonbill 3

## ASSEMBLY - 3 NOVEMBER - HOSTED BY WHIMBREL 2

ROEBUCK RIPPLE RECOGNITION AWARDS					
Lenny G	Eliza S	Mikayla W	Libby M	Clancy H	Charlotte S
Ned C	Thomas R	Charlotte G	Paolo M	Bella R	Maisie L
Ted P	Charlotte R	Jacob H	Kade W	Boyd R	Alecia W
Stella B	Travis O	Sam R	Lily B	Ky'lani B	Levi C
Freya C	Evie F	Jackson L	Joshua M		

BADGES			
Mila W <b>Bronze</b>	Eliza S <b>Bronze</b>	Grace P <b>Bronze</b>	Mabel B <b>Bronze</b>

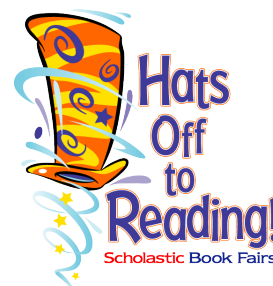
SPECIALISTS		
Science Spoonbill 4	Indonesian Ibis 2	Music Spoonbill 2

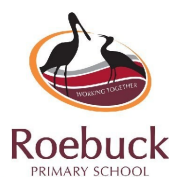
## BOOK FAIR THANK YOU

Many thanks to all of you who supported our Book Fair. We raised just under \$1000 for the school library which is fantastic. Special thanks to the adult helpers – Paul, Trent, Bel and Blake for the set up and pack away, and to Bel, Saori, Mica, Chris, Jane, Lis and Alex. Your help in all the chaos is invaluable! Thanks also to our student helpers, Bailey, Carys, Charles, Charlottes R and S, Clayton, Denis, Jacob, Kian, Leah, Lucy, Mackie, Mollie, Oliver, Riva, Zoey.

Many thanks,

*Ms Val Burgess* Librarian





## Roebuck Primary School Behaviour Expectations



	Respect	Responsibility	Resilience
Always	<ul style="list-style-type: none"> <li>Respond to others with patience and manners</li> <li>Use appropriate language for school</li> <li>Follow instructions the first time</li> <li>Work cooperatively with others</li> <li>Take care of all belongings and equipment</li> <li>Respect cultural and personal differences</li> </ul>	<ul style="list-style-type: none"> <li>Arrive on time to school and classes</li> <li>Own your actions</li> <li>Be prepared for the day</li> <li>Use all equipment safely</li> <li>Listen attentively</li> <li>Think before you act</li> <li>Keep your hands, feet and objects to yourself</li> <li>Walk around corners and in undercover areas</li> </ul>	<ul style="list-style-type: none"> <li>Persevere and accept challenges</li> <li>Learn from your mistakes</li> <li>Be able to compromise</li> <li>Apologise when you need to</li> <li>Have a positive attitude</li> </ul>
Learning Time	<ul style="list-style-type: none"> <li>Show active listening</li> <li>Follow lesson expectations</li> <li>Allow others to learn</li> <li>Ask before borrowing items and return them</li> <li>Support your classmates</li> </ul>	<ul style="list-style-type: none"> <li>Participate to the best of your ability and take pride in your work</li> <li>Focus on each task</li> <li>Ask questions and seek feedback</li> </ul>	<ul style="list-style-type: none"> <li>Accept constructive feedback and apply it to your learning</li> </ul>
Break Time	<ul style="list-style-type: none"> <li>Follow the rules of the game</li> <li>Play safe and fair</li> </ul>	<ul style="list-style-type: none"> <li>Set the rules before each game</li> <li>Play in the correct areas</li> <li>Wear your hats</li> <li>Report problems to duty teachers</li> </ul>	<ul style="list-style-type: none"> <li>Show positive sportsmanship</li> <li>Have a go at something new</li> <li>Focus on having fun</li> </ul>
Adult's Role	<ul style="list-style-type: none"> <li>Act as a positive role model and be mutually respectful</li> <li>Use positive language at school</li> <li>Provide a safe and productive work environment</li> </ul>	<ul style="list-style-type: none"> <li>Explicitly teach routines and procedures</li> <li>Be prepared for the day</li> <li>Actively supervise on duty</li> <li>Consistently acknowledge positive behaviour</li> <li>Follow parking guidelines</li> <li>Follow the appropriate lines of communication</li> </ul>	<ul style="list-style-type: none"> <li>Support each other</li> <li>Communicate effectively</li> <li>Work together for resolutions</li> </ul>

At Roebuck Primary School, our commitment to fostering a positive learning environment is guided by our three behaviour expectations of Respect, Responsibility and Resilience using the WA Positive Behaviour Schools (PBS) framework.

This is an evidence-based behaviour management approach that ensures all school behaviours are explicitly defined, taught and reinforced using positive incentives. This allows all students the opportunity to achieve academic and social success in a supportive and safe environment. Research shows that by developing effective whole-school systems that are consistent, supported by data and implemented with fidelity, the wellbeing of staff and students greatly improves.

As a school community, our overarching goal is to guide students towards accountability for their behaviours, empowering them to achieve a sense of mastery and belonging to their community. Our commitment is to shape responsible, respectful and resilient individuals who contribute positively to both their immediate and broader communities.

At Roebuck Primary School, students will be rewarded with a token of appreciation for displaying appropriate behaviours. This helps to acknowledge and reinforce the positive social culture of our school and helps to encourage all students to show Respect, Responsibility and Resilience within our community. These tokens will be given out consistently across the school with a common language to reinforce our effective whole-school system. The tokens allow students to not only work towards individual rewards, but faction, class or whole school rewards as well.

*Ms Shannen King* PBS Team Leader

**"If a child doesn't know  
how to read, *we teach.*  
If a child doesn't know to  
swim, *we teach.*  
If a child doesn't know how  
to multiply, *we teach.*  
If a child doesn't know how  
to drive, *we teach.*  
If a child doesn't know to  
behave, *we teach?*  
*Or punish?"***

Herner 1998

## 2023 CHARGES AND VOLUNTARY CONTRIBUTIONS

### VOLUNTARY CONTRIBUTIONS K-6 Curriculum Area COST

The Arts	\$10.00
English	\$20.00
Mathematics	\$5.00
Science	\$5.00
Physical & Health Education	\$10.00
Library	\$10.00
<b>TOTAL</b>	<b>\$60.00</b>

Cash or cheques (payable to Roebuck Primary School) are accepted, **EFTPOS** or a direct credit to our school bank account:-

A/c Name      Roebuck Primary School  
Bank          Commonwealth Bank  
BSB          066 505  
Account No.    10134441  
Reference      Please put your child's name

Voluntary Contributions and Charges were approved at School Board meeting held on 31 July 2023.

## CHARGES

### Extra Cost Options Estimated Maximum Cost

Excursions/Visiting Artists	K-6	\$120.00
Interschool Sport	1-6	\$60.00
Swimming	1-6	\$90.00
School Camp	6	*\$650.00
Leadership Camp	5-6	\$60.00
Graduation	6	\$60.00
PEAC	5-6	\$200.00
IMSS	5-6	\$190.00

\*\$650 is the expected total cost inclusive of all activities, accommodation, transport and food for a five day camp. Parent fundraising has historically reduced the contribution to approximately \$300 per student. This amount per child per annum is therefore dependent and directly related to the effort and energy of the fundraising.

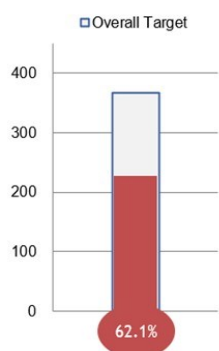
Prior to camp, payment plans may be negotiated with the Principal.

**Payment will be requested during the school year when costs and participation by students is confirmed.**

Please note that transport costs related to any excursion are non-refundable.

## REMINDERS FROM ADMINISTRATION

### 2023 Voluntary Contributions



### SCHOOL STRUCTURE

Planning for the 2024 expected school class structure has commenced. This takes several weeks and a considerable amount of thought and deliberation.

Please refer to the letter from Mr Shem on Connect that explains the guidelines that which we must abide to develop our school structure.

### HAVE YOU MOVED OR ARE YOU LEAVING?

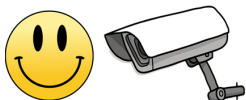
It is important that the school has up-to-date information for all our students. If you have changed address, phone number or any other details, please contact the office as soon as possible to update your information. You are welcome to send an email to [roebuck.ps@education.wa.edu.au](mailto:roebuck.ps@education.wa.edu.au) at any time.

### PARKING REMINDER

A reminder to parents, please park in the designated parking area in the Spoonbill Ave carpark when dropping off and collecting your child from school.

## CCTV IS HERE

### SECURITY NOTICE



**SMILE YOU ARE  
ON CAMERA**

If you witness any antisocial behaviour or note damage to property outside school hours, please call Department of Education Security on 1800 177 777.

Over the previous school holidays, we had 16 CCTV cameras installed externally around the school grounds that are 24/7, caring for our school.

We welcome sporting groups, families and students to use our facilities and grounds before and after school; that is why the School Board has advocated to keep our school open and not fenced. Our facilities and grounds should be used by our Roebuck community. If there is anti-social behaviour and/or vandalism this shall be followed up with the relevant parents and or authorities.

Please let your children know that if they see any anti-social behaviour or vandalism, we have the perpetrators on camera, and they should not intervene - their safety is paramount, and the cameras will be enough evidence for us to action.

Please be assured that footage is only viewed by Administration staff and only when a notifiable incident has occurred (such as vandalism, breaking and entering or theft).



# SCHOOL NEWS

## POETRY SLAM



At Roebuck school, on Friday, November 10,  
A poetry slam, where talents blend and bend.  
Students spoke of friends, seasons and pets,  
The sounds of clicks the applause with which they were met.

Congratulations to one and all,  
The courage to present on stage you stood so tall,  
On this date etched in memory,  
A celebration of words and poetry.

Zoey R, Stevie KF, Duke SR, and Jackson L so true,  
Won the spotlight, a deserving crew.  
Now, onward they go, heads held high,  
To the interschool slam, under Broome's vast sky.

On Thursday, November 23, they'll compete,  
Against others from Broome, a challenge to meet.  
A journey from Roebuck, to a wider scene,  
In the world of words, where they'll intervene.

The stage awaits for the next chapter to unfold,  
For Zoey, Stevie, Duke, and Jackson bold.  
In simple language, their stories spun,  
A celebration of words, and the journey's just begun.

## P&C NEWS

PLEASE NOTE: The Department of Education requires us to differentiate between school organised, P&C organised and Community events

Hello Roebuck Primary, my name is Maggie McCrum. I am the proud mother of three beautiful children, Harper in year 2, Hadley in year 1 and Harlee, 2 years old.

I have always been interested in what the P&C do but never really thought that I could contribute that much with a small child still glued to my hip. How wrong I was. Once I finally attended my first meeting I saw that all the parents were juggling full time work, full time parenting or all of the above and I quickly realised any help was very much appreciated. Now that I am a bit more involved (running the second hand uniform shop with two other mums) I love helping and giving back to our wonderful school and I strongly encourage any parent thinking of attending to come, as we could definitely use the help, the ideas and the new faces in the P&C in 2024.

In the meantime, the P&C are seeking cash donations for the book awards for the end of year presentation. Please email [roebuck.pandc@gmail.com](mailto:roebuck.pandc@gmail.com) for further details. Donations will close on Wednesday 22 November to ensure teachers have enough time to purchase the books.

The second hand uniform stall will open twice more this year, on Tuesday 21 November from 1:45pm to 2:15pm and Tuesday 5 December from 7:45am to 8:15am in the Greenshank block undercover area - eftpos only.

Finally, we have one more event to finish off an incredible 2023 of fundraising. The Christmas Raffle will be run from the Wednesday 29 November with prizes drawn at the Presentation Night on Thursday 30 November. Lots of great prizes thanks to many local Broome businesses. More info will be on Facebook and Connect in the coming weeks.



COME TO SEE THE  
ROEBUCK PRIMARY

# CHOIR AND BAND

COMMUNITY LUNCH  
TIME CONCERT



Thursday November 23

12:20-12:50pm, assembly area



PLEASE NOTE: The Department of Education requires us to differentiate between school organised, P&C organised and Community events

# NAVIGATING CONSENT AND RESPECTFUL RELATIONSHIPS

**Monday 20 November at 6pm**

Broome Senior High School (P Block)

Parents and Broome community members, all welcome.

Join us for a presentation by Collective Shout on social media and youth well-being. Learn how adults can empower youth to promote respect and empathy.

Essential for anyone supporting adolescents. Enhance your understanding of youth-related challenges.



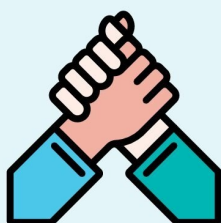


# Connect and Respect

**Every student, staff member, parent or carer has the right to feel safe and be safe in our schools.**

We all share a responsibility for providing a safe, supportive and productive environment, free from bullying, harassment, discrimination and violence.

## What we can all expect:



mutual  
respect



good  
behaviour



open  
communication



respect for each  
other's time

## We will not tolerate:



offensive, insulting  
or aggressive  
language



malicious or  
judgemental  
gossip



using  
social media  
disrespectfully



any form  
of violence

**Shared and respectful expectations and values will enable us to work together in the best interests of our children.**